

# DVB-S2X Constellation Mapping

Checking S2X constellation mapping with R&S FSVR:

copy all .vam files to FSVR

FSVR directory: C:\R\_S\instr\vs\Constellation\

to select a DVB-S2X mapping, select

- "User QAM"
- Order (8ary, 16ary, 32ary, 64ary, 128ary, 256ary)
- choose mapping, which is corresponding to BTC setting (BTC ModCod number)

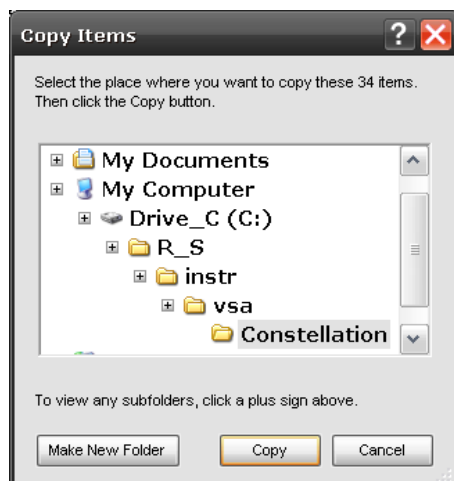
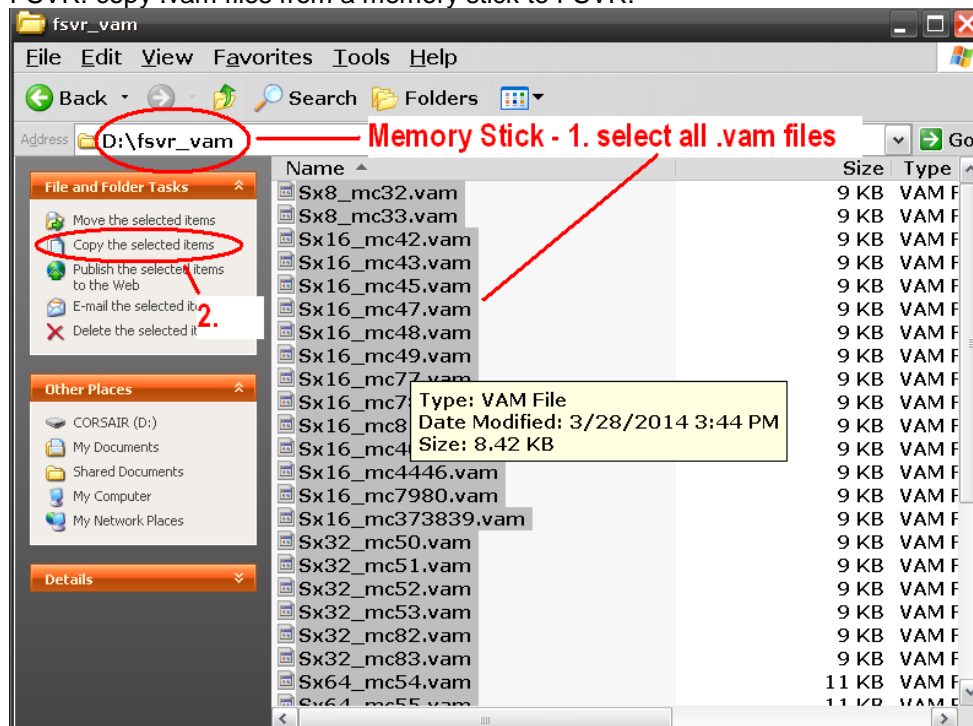
hint:

Sx16\_mc373839 means that this is the same mapping for BTC ModCod number 37, 38 and 39

Sx16\_mc4041 means that this is the same mapping for BTC ModCod number 40 and 41

Sx16\_mc42 means that this is the mapping for BTC ModCod number 42

FSVR: copy .vam files from a memory stick to FSVR:



## Example:

Sx256\_63:

- Sx = DVB-S2X constellation
- 256 = 256ary
- 63 = Num ModCod (RS BTC)

